

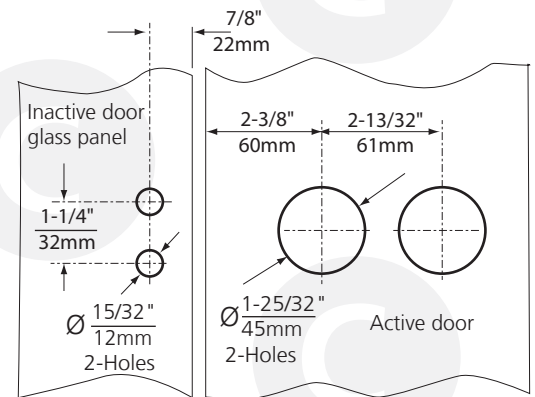
PF SERIES GLASS PATCH FITTING LOCK INSTALLATION INSTRUCTIONS

A. PREPARATION

1. Determine door handing. Verify that the lock is configured for the appropriate door handing. Handing is configured as LH, RH, LHR or RHR
2. Lock fits glass doors 5/16 to 1/2" (8 to 12.7mm) thick*
3. Assemble lock for the appropriate handing. If latch orientation is not appropriate, follow instructions to change orientation
4. Prepare glass door by cutting the required holes 1 23/32" (45mm) at indicated positions
5. Prepare frame for the applicable strike
6. If glass door strike (PF200) is used prepare the inactive door or glass panel to accept the strike by drilling the indicated holes 15/32" (12mm)

*For 1/2" (12.7mm) thick glass use M6X35L screws supplied with lock.
For 5/16" (8mm) - 3/8" (10mm) thick glass use M6X30L screws also supplied.

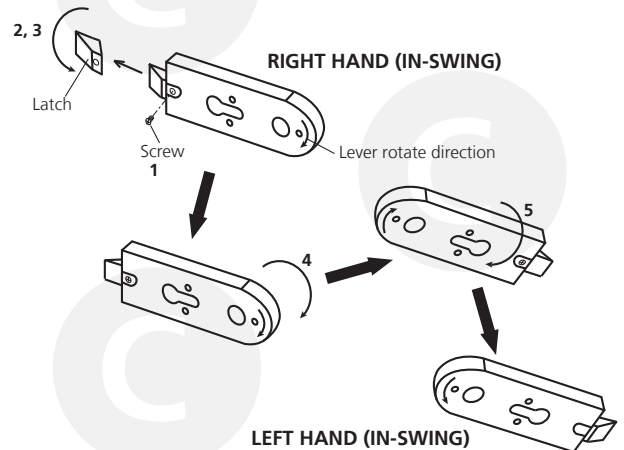
Glass cutout



Primary dimensions are in millimeters
Dimensions in inches are for reference only

B. HANDING CHANGE FOR IN-SWING (RH, LH) LOCK (if required)

1. Remove screw from latch
2. Pull out the latch and rotate 180°
3. Re-insert latch and secure with screw
4. Rotate main body as shown
5. Rotate main body from inside to outside
6. Reverse the process to change the handing from left hand to right hand
7. Use same method (or reverse) for out-swing (RHR, LHR) lock



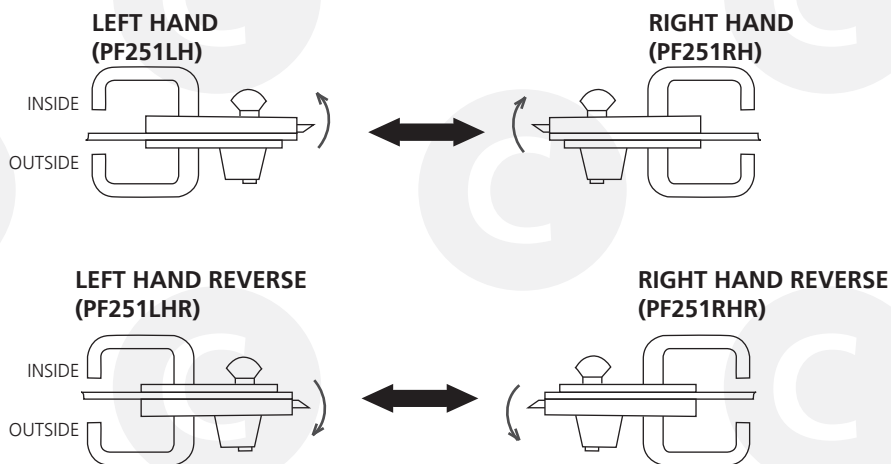
PF SERIES GLASS PATCH FITTING LOCK INSTALLATION INSTRUCTIONS

C. GLASS DOOR LOCK HANDING CONFIGURATIONS:

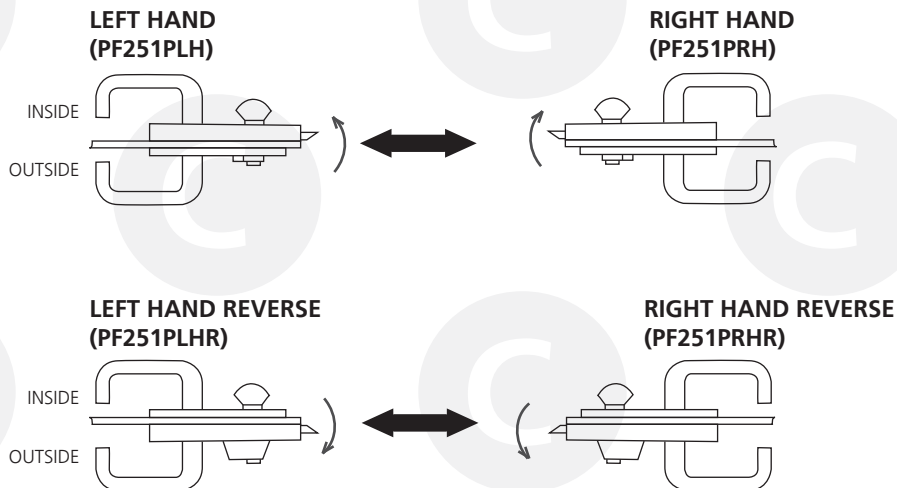
Handing conversion is possible only between:

- Left hand to right hand (or vice versa)
- Left hand reverse to right hand reverse (or vice versa)

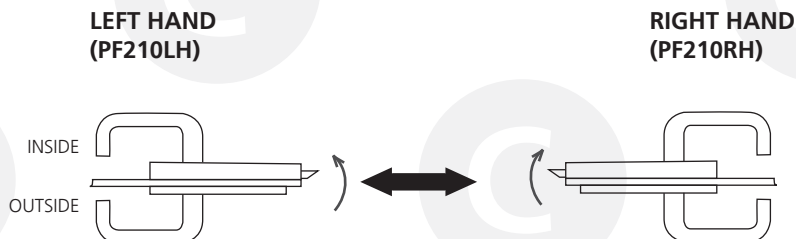
1. GLASS DOOR ENTRY PATCH FITTING LOCK WITH **KIK** CYLINDER



2. GLASS DOOR ENTRY PATCH FITTING LOCK WITH **PROFILE** CYLINDER



3. GLASS DOOR PASSAGE PATCH FITTING

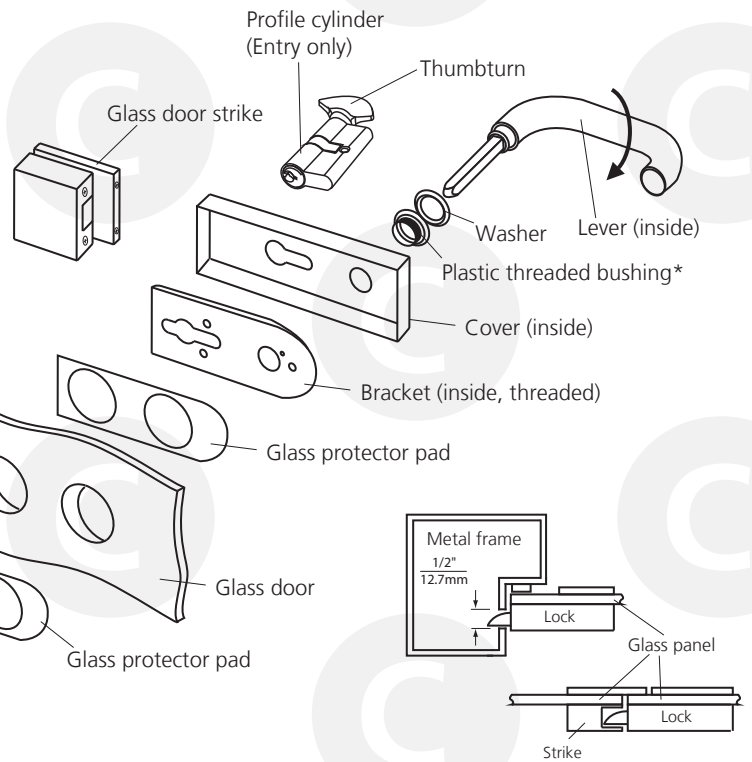
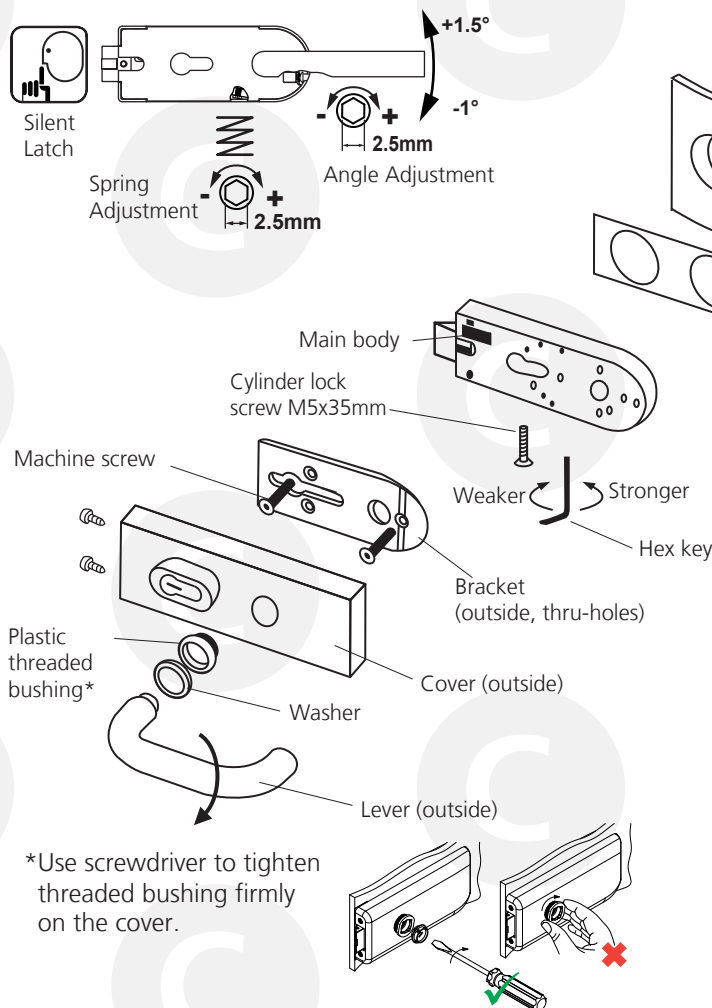


PF SERIES GLASS PATCH FITTING LOCK INSTALLATION INSTRUCTIONS

D. OUT-SWING (LHR, RHR) Assembly and Installation

(Illustrations depict a lock with a profile cylinder. Use same installation for locks with a KIK cylinder and passage function)

1. Position glass protector pads on lock main body and on the inside bracket.
2. Place inside bracket with threaded holes on the inside surface (fitting in line with the door holes), place the main body and other bracket on the outside door surface and attach with 2 machine screws. Before tightening screws, ensure there is no metal contact between the glass and the lock metal parts, and that the lock body door edge side is flush or does not protrude outside the door edge.
3. For entry locks insert out-swing profile cylinder (PLHR, PRHR) in the lock body, until the thumbturn can operate the latch and secure the profile cylinder with machine screw as indicated. Machine screw length should not exceed indicated value.
4. Remove thumbturn (for entry) to install inside cover. Secure inside cover to bracket with plastic threaded bushing.
5. Place outside cover on lock body and secure to bracket with plastic threaded bushing and to the lock body with two machine screws.



6. Insert levers and secure as indicated.
7. Install and secure strike as indicated.
8. Operate lock and door and ensure lock latches properly. Ensure that the lever activates the latch when turned downwards.
9. If lever does not return to its horizontal position, increase spring tension. Remove thumbturn and lock cover and turn indicated set screw clockwise.
10. Assemble glass door strike (if applicable) and secure to door with supplied screws. Install strike covers.

PF SERIES GLASS PATCH FITTING LOCK INSTALLATION INSTRUCTIONS

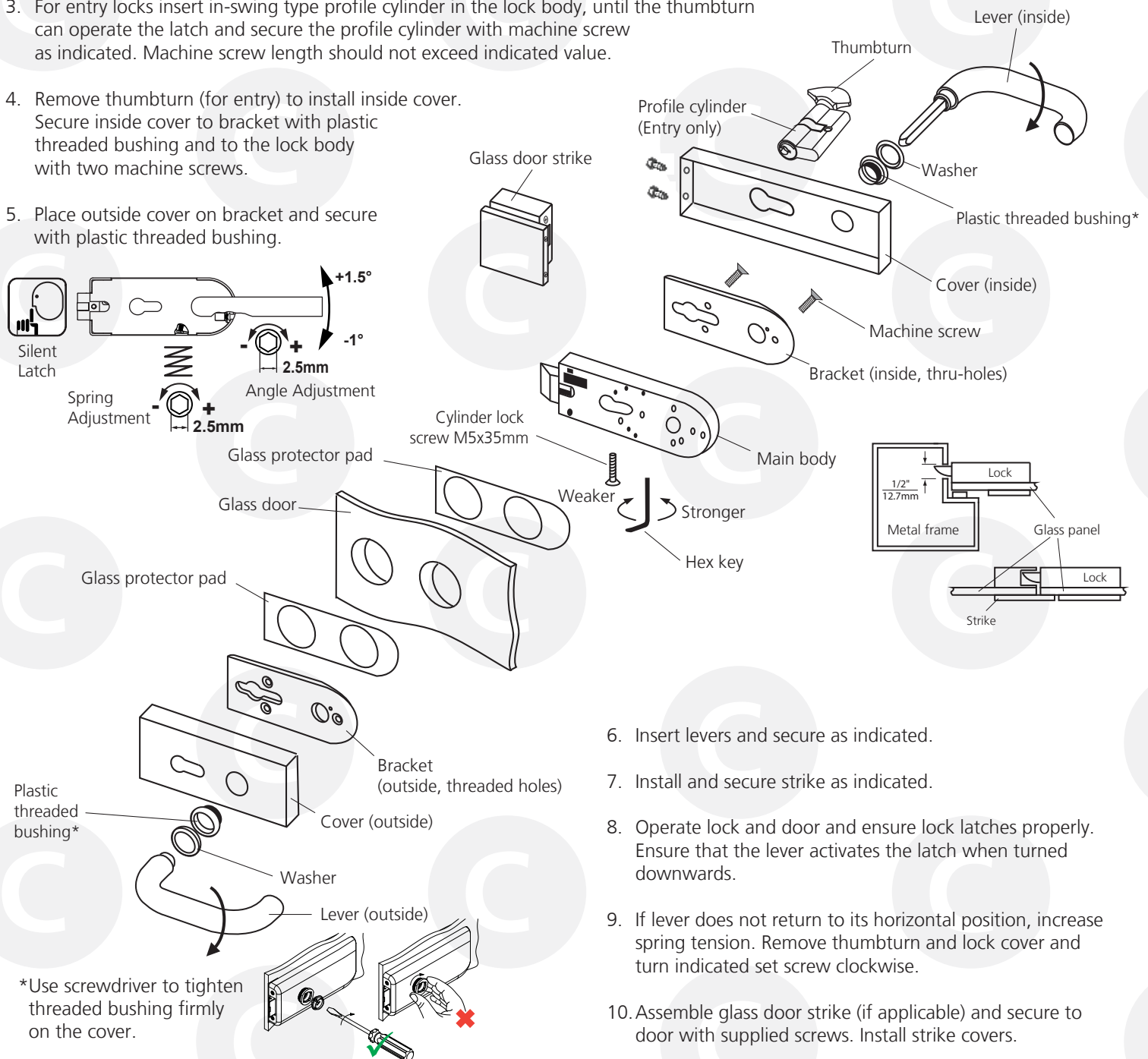
E. IN-SWING (LH, RH) Assembly and Installation

(Illustrations depict a lock with a profile cylinder. Use same installation for locks with a KIK cylinder and passage function)

1. Position glass protector pads on lock main body and on the outside bracket.
2. Place outside bracket with threaded holes on the outside surface (fitting in line with the door holes), place the main body and other bracket on the inside door surface and attach with 2 machine screws. Before tightening screws, ensure there is no metal contact between the glass and the lock metal parts, and, that the lock body door edge side is flush or does not protrude outside the door edge.
3. For entry locks insert in-swing type profile cylinder in the lock body, until the thumbturn can operate the latch and secure the profile cylinder with machine screw as indicated. Machine screw length should not exceed indicated value.

4. Remove thumbturn (for entry) to install inside cover. Secure inside cover to bracket with plastic threaded bushing and to the lock body with two machine screws.

5. Place outside cover on bracket and secure with plastic threaded bushing.



6. Insert levers and secure as indicated.
7. Install and secure strike as indicated.
8. Operate lock and door and ensure lock latches properly. Ensure that the lever activates the latch when turned downwards.
9. If lever does not return to its horizontal position, increase spring tension. Remove thumbturn and lock cover and turn indicated set screw clockwise.
10. Assemble glass door strike (if applicable) and secure to door with supplied screws. Install strike covers.