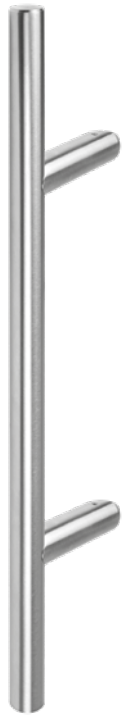


A new **ANGLE** on Ladder Pulls!

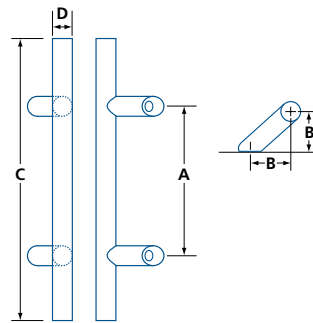


DOREX® 19R-E45 Door Pulls

Adding to our popular line of 1 ¼" (32mm) diameter ladder pulls, we are pleased to introduce the new 19R-E45, 45° Offset Ladder Pull. Integrate esthetics & functionality with these new preassembled ladder pulls with 45° posts.



19R12E45-630



19R-E45

- Pull is offset for better functionality & aesthetics
- For wood or metal doors 1 ⅜–2 ¼" (35–57 mm) thick
- For glass doors ⅝–½" (8–13 mm) thick
- 304 Stainless steel
- Available in paired or single pulls
- Single pulls are thru-bolt mounted with round end-caps
- All necessary mounting hardware included
- Packaged in an eco-friendly, fully recyclable, box
- Offset clearance 2 ⅝" (70.6 mm)

MODEL	TYPE ¹	FINISH	A	B	C	D	/BOX
19R12E45	B, S*	-630, -19	12 (305)	2 ⅝" / 32 (70.6)	24 (610)	1 ¼" / 32 (32)	(B) 1 pair (S) 1 single
19R24E45	B, S*	-630, -19	24 (610)	2 ⅝" / 32 (70.6)	36 (915)	Ø1 ¼" / 32 (32)	(B) 1 pair (S) 1 single
19R36E45	B, S*	-630, -19	36 (915)	2 ⅝" / 32 (70.6)	48 (1220)	1 ¼" / 32 (32)	(B) 1 pair (S) 1 single
19R48E45	B, S	-630, -19	48 (1220)	2 ⅝" / 32 (70.6)	60 (1524)	1 ¼" / 32 (32)	(B) 1 pair (S) 1 single
19R60E45	B, S	-630, -19	60 (1524)	2 ⅝" / 32 (70.6)	72 (1829)	1 ¼" / 32 (32)	(B) 1 pair (S) 1 single
19R72E45*	B, S	-630, -19	72 (1829)	2 ⅝" / 32 (70.6)	84 (2134)	1 ¼" / 32 (32)	(B) 1 pair (S) 1 single

IN (MM) (1) B= PAIRED PULLS S= SINGLE PULL (*) SPECIAL ORDER

