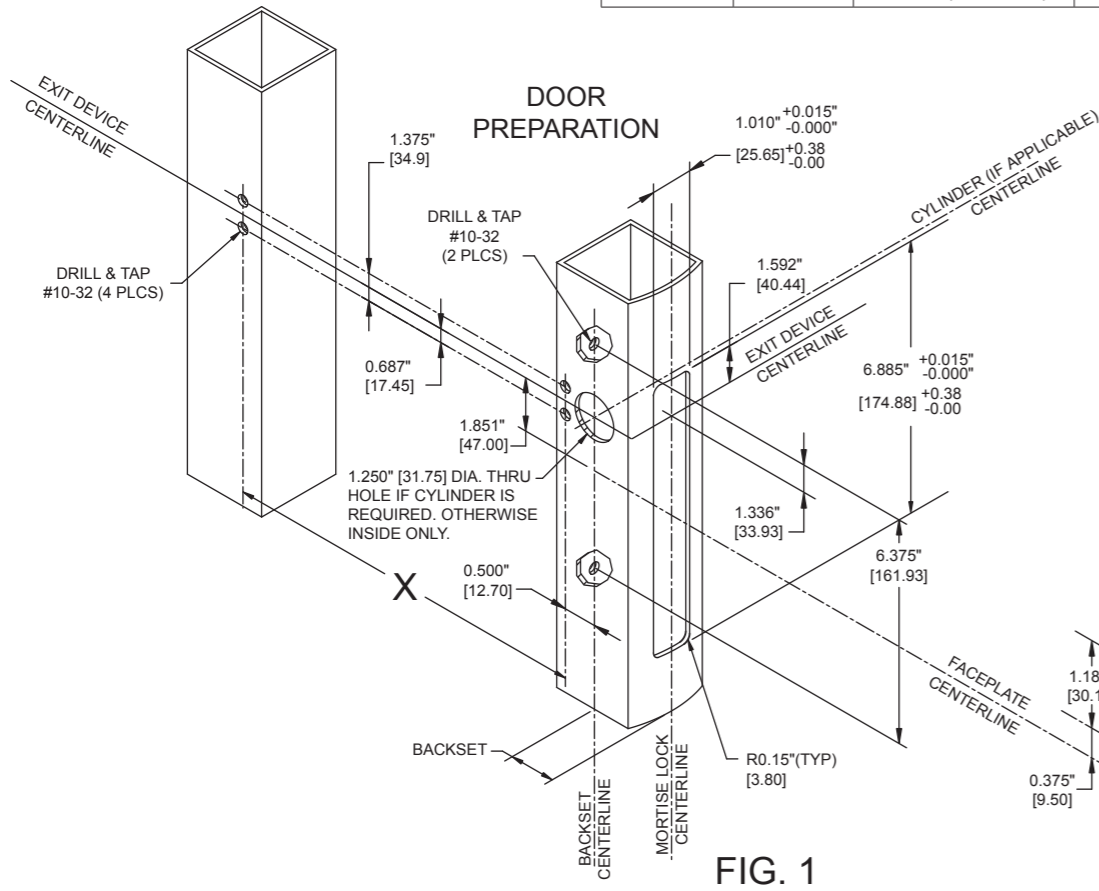


1400 SERIES RIM EXIT DEVICE INSTALLATION INSTRUCTIONS



1. Follow the installation instructions carefully. Improper installation may damage the door, the product and may affect its functionality.
2. These installation instructions may be used to install device on 1-3/4" thick doors ONLY.
3. Refer to instructions on page 2 for adjusting the pushpad length and reversing hand on exit device and mortise lock.

Dimension	Backset	Nominal Door Opening Width			
		30" (762mm)	36" (914.4mm)	42" (1 066.8mm)	48" (1 219.2mm)
X	1 1/8"	26.84" (681.7mm)	32.84" (834.1mm)	38.84" (986.5mm)	44.84" (1 138.9mm)



A. DOOR AND FRAME PREPARATION (Fig. 1 and Fig. 2)

1. Locate and mark the exit device centerline height and backset lines. (Refer to Fig 1)
2. Locate and mark the deadlatch strike centerline height. (Refer to Fig 2)
3. Use installation Templates D, E, F & G to make the required cutouts and mounting holes for the installation of the exit device, the mortise lock and the strike.

B. MORTISE LOCK INSTALLATION (Fig. 3):

1. Verify the mortise lock handing before proceeding with this installation. Reverse handing if required as per supplied instructions on page 2.
2. Insert mortise lock into stile cut-out and temporarily place face plate in position. Adjust mounting post to length required to bring face plate flush with stile.
3. Insert outside cylinder (if applicable) through stile cut-out and thread onto lock body.
4. Firmly secure lock case using two #10-32 x 1-7/8" flat head screws. Verify that the cylinder operates the deadlatch.
5. Install faceplate and secure with two #8-32 machine screws.

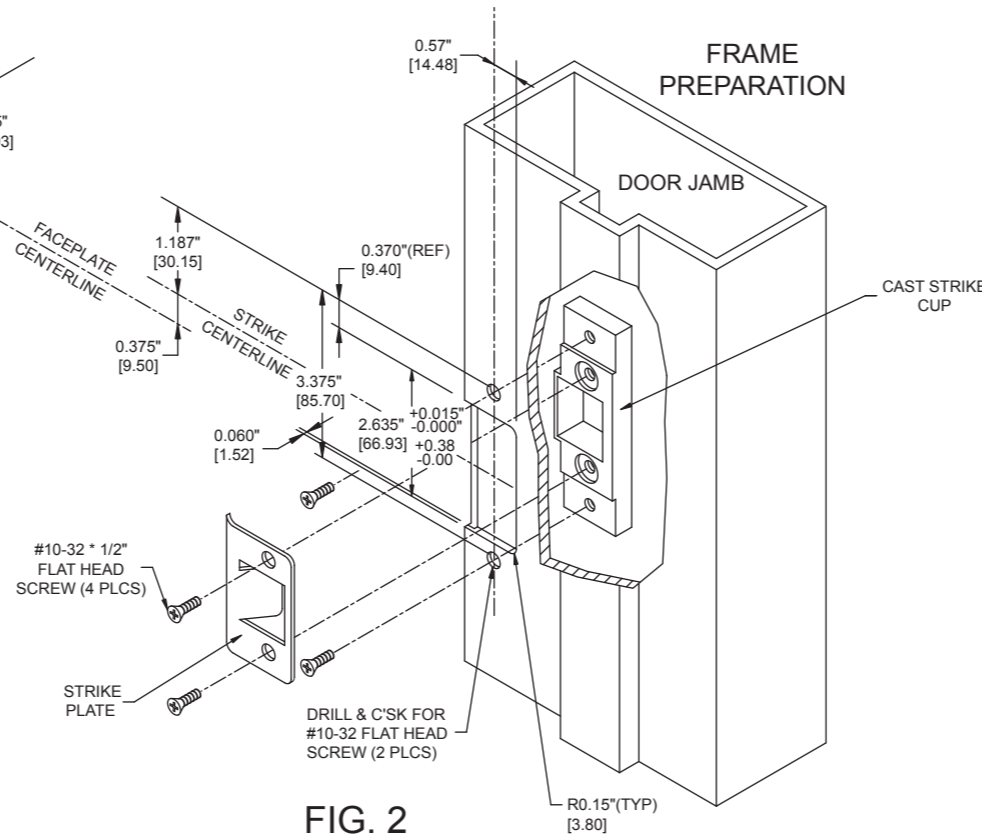


FIG. 2

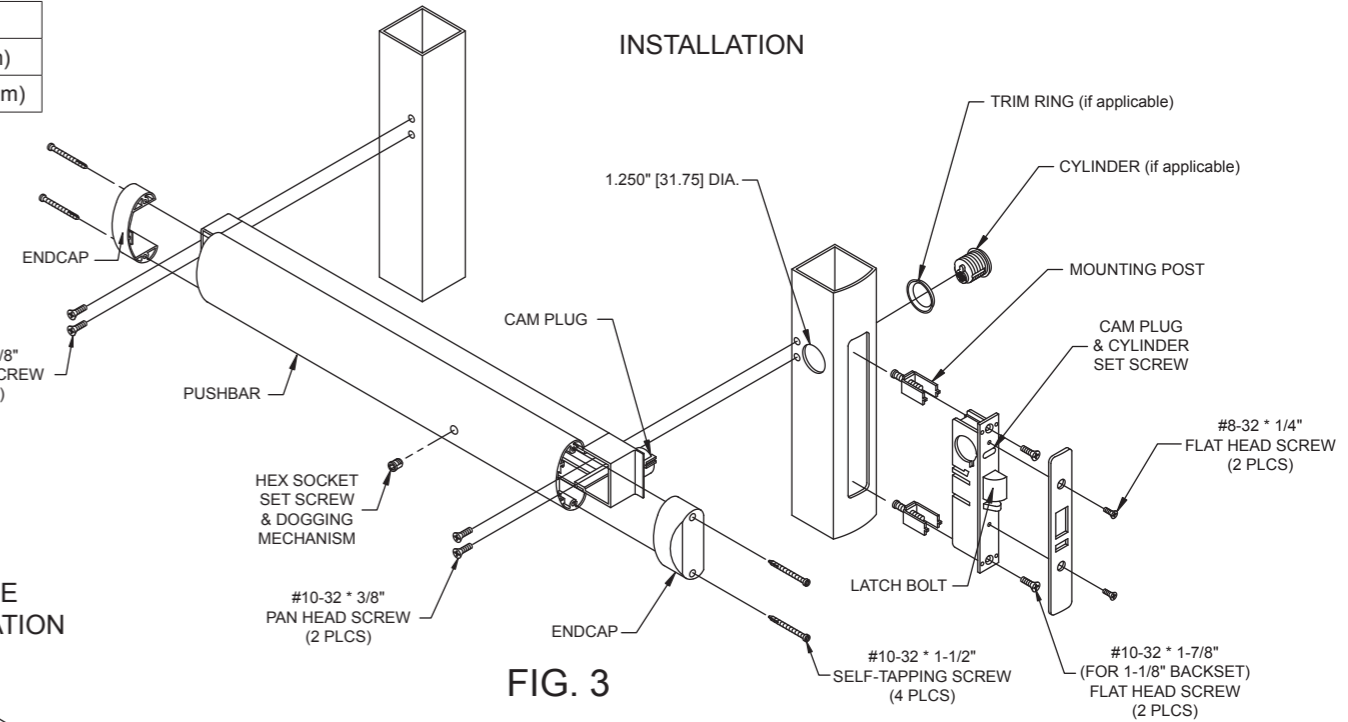


FIG. 3

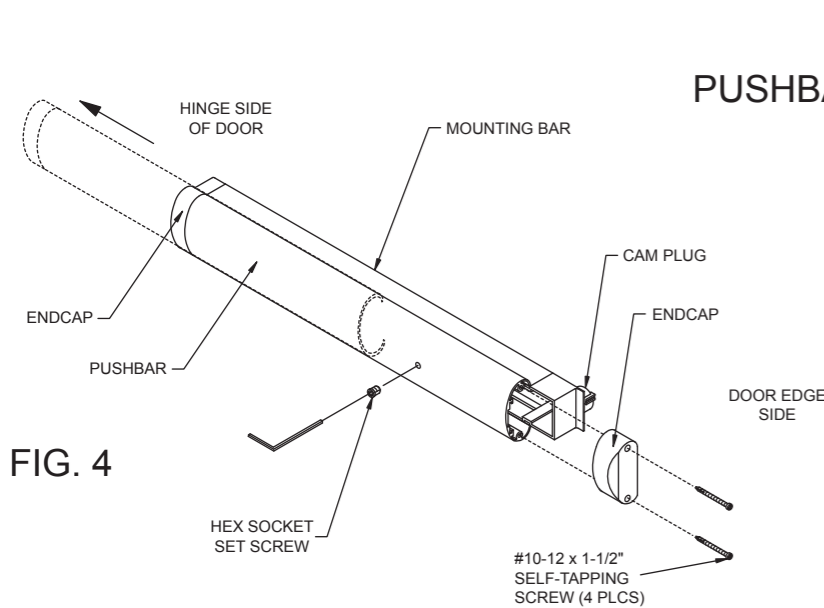
C. EXIT DEVICE INSTALLATION (Fig. 3):

1. Remove endcaps from both ends of pushbar.
2. Fully depress latch bolt.
3. Insert cam plug into 1.250" dia. stile cut-out.
4. Fix pushbar in position using four #10-32 x 3/8" pan head screws.
5. Tighten cam plug set screw.
6. Fix face plate in position using two #8-32 x 1/4" flat head screws (note face plate should be flush with stile).
7. Verify that the pushbar operation engages and retracts the latchbolt.

D. STRIKE INSTALLATION (Fig. 2):

1. Install cast strike cup within the door jamb using two #10-32 flat head screws provided.
2. Fix the strike plate to the outer face of the door jamb using two #10-32 flat head screws.
3. Verify that the latchbolt engages properly with the strike.

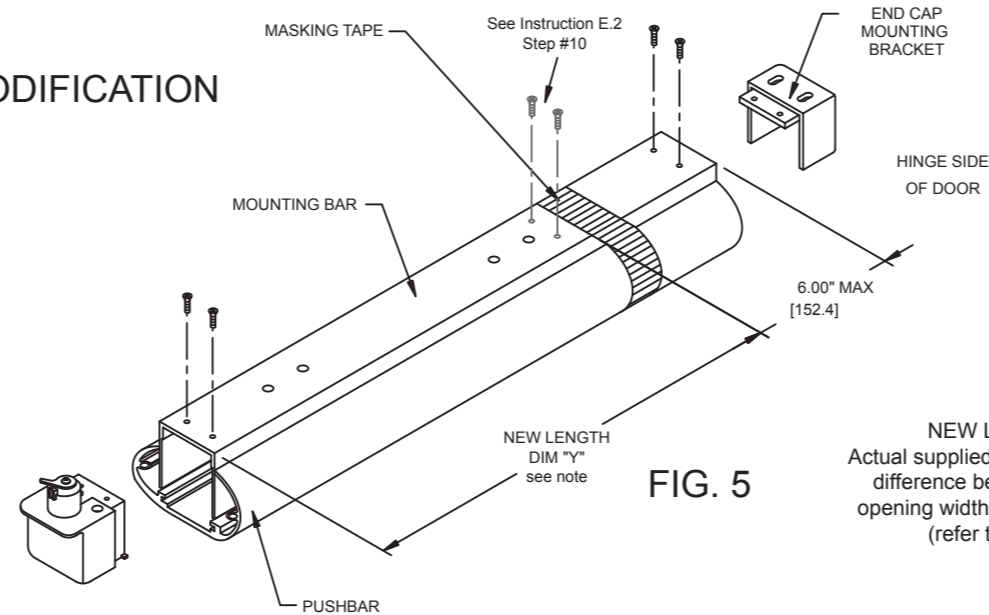
1400 SERIES RIM EXIT DEVICE PUSHBAR LENGTH ADJUSTMENT AND HANDING REVERSAL INSTRUCTIONS (IF REQUIRED)



E.1 PUSHBAR SEPARATION (Fig. 4):

1. Remove two #10 x 1-1/2" screws from the endcap nearest the door edge side.
2. Using allen-key provided, remove hex socket set screw from bar.
3. Gently slide pushbar towards hinge side of door until free from the mounting bar.

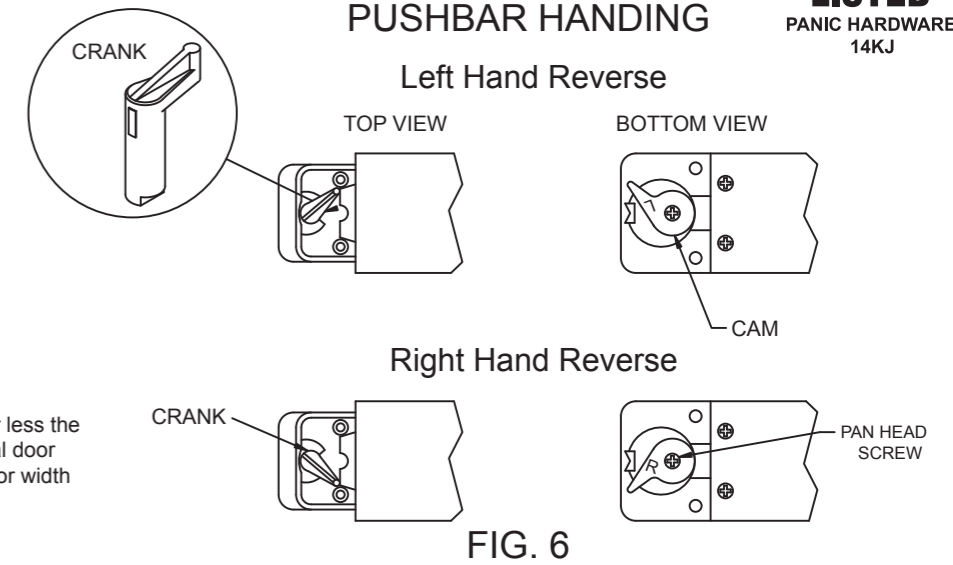
PUSHBAR MODIFICATION



E.2 ADJUSTMENT OF BAR LENGTH FOR NON-STANDARD DOOR WIDTHS (Fig. 5):

1. Place device with pushbar facing down. Protect pushbar surface from being scratched.
2. Remove two screws from endcap mounting bracket at the hinge side of door.
3. Detach end cap mounting bracket.
4. Determine the new bar length (dimension "Y") as per note in Fig. 5.
5. Fully depress pushbar and lock using the dogging mechanism and provided allen-key.
6. Apply masking tape in area of cut-off.
7. Mark new pushbar length on masking tape.
8. Saw off excess length (hinge side of door).
9. Remove tape and deburr.
10. Drill two new holes for endcap mounting bracket and fix in position.

NOTE
NEW LENGTH - DIM "Y"
Actual supplied length of pushbar less the difference between the nominal door opening width and the actual door width (refer to table on page 1)

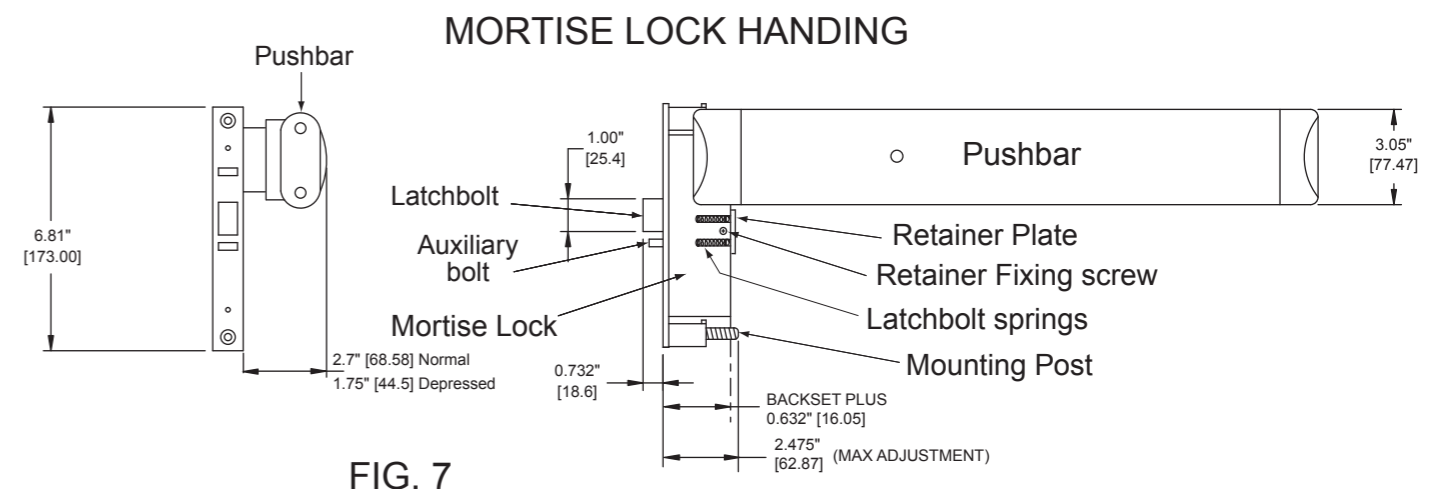


E.3 HANDING REVERSAL FOR CAM (Fig. 6):

1. Ensure endcap nearest door edge side is removed.
2. Remove pan head screw from underside of bar (see bottom view).
3. Take note of cam orientation, and then remove.
4. Slide out crank and rotate 90 degrees (see top view).
5. Re-insert crank.
6. Flip cam over and install on underside of bar.
7. Re-install pan head screw and tighten.

E.4 HANDING REVERSAL FOR MORTISE LOCK (Fig. 7):

1. Remove fixing screws from retainer plate.
2. Detach retainer plate and remove the two latch springs.
3. Slide out auxiliary bolt.
4. Remove latchbolt and deadlocking assembly. Care should be taken not to dislodge small inner spring.
5. With assembly removed, take out inner deadlocking spring.
6. Knock out hinge pin from assembly and remove deadlocking arm.
7. Reposition deadlocking arm on opposite side of latch bolt and re-insert pin.
8. Insert small inner spring and install latch bolt and dead locking assembly into lock case.
9. Install auxiliary bolt.
10. Replace the two latch springs.
11. Fix retainer plate in position.



E.5 PUSHBAR ASSEMBLY:

1. Ensure endcap nearest door edge is removed from pushbar. Endcap at hinge side of door should be in position.
2. Slide the pushbar onto the mounting bar over the first linkage nearest to the hinge side of door. Slide past second linkage and continue to slide bar towards the door edge. Pushbar should "snap" into place once fully seated.
3. Using Allen-key provided, insert hex socket set screw through hole in pushbar and tighten. This ensures pushbar is rigidly fixed onto mounting bar mechanism.
4. Fix door edge side endcap in position.