

CONCEALED SPRING CLOSERS

SPECIALTY DOOR CLOSERS



PERKOMATIC CONCEALED SPRING CLOSER

PERKOMATIC



- cULus Listed for use on wood fire doors rated up to 30 minutes
- Concealed in door
- Suitable for interior doors up to 165 lbs (75 kg)
- Fits doors 1¾" (44.5 mm) thick
- Door opening depends on installation - up to a maximum of 180°
- Not recommended for use on doors fitted with parliament (butterfly), concealed, projecting or rising butt hinges
- Adjustable latching speed
- Non-handed
- Endurance tested for 500,000 cycles

OFFICIAL DISTRIBUTOR Available in a variety of finishes – please contact to order or visit www.perkopower.com for details

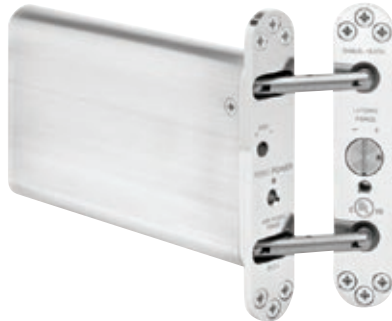
PERKOMATIC	C26D
MODEL	FINISH

PLEASE CONTACT FOR SELECTION HELP



POWERMATIC CONCEALED HYDRAULIC CLOSER

POWERMATIC



- cULus Listed for use on wood fire doors rated up to 45 minutes with intumescent mastic; up to 3 hours on metal doors
- Conforms to ANSI/BHMA 156.4 requirements
- Conforms to ADA maximum force requirements
- Concealed in door
- Suitable for latching and non-latching applications
- Suitable for doors up to 175 lbs (80 kg) and 37½" (950 mm) wide
- Fits doors 1¼–1¾" (32–44.5 mm) thick
- Door opening depends on installation - up to a maximum of 105°
- Not recommended for use on doors fitted with concealed hinges
- Adjustable latching and closing speed
- Non-handed
- Endurance tested for 500,000 cycles

OFFICIAL DISTRIBUTOR Available in a variety of finishes – please contact to order or visit www.perkopower.com for details

POWERMATIC	C26D
MODEL	FINISH

PLEASE CONTACT FOR SELECTION HELP

