



Arrow mark

Top jamb of frame

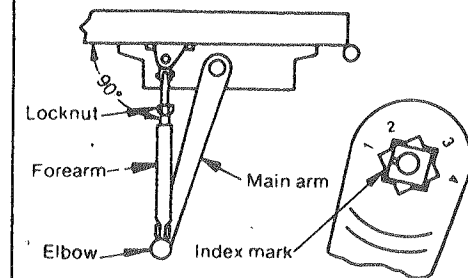
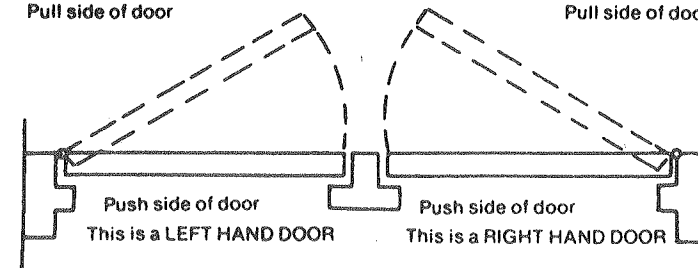
STANDARD/PRESET IN BACK CHECK DOOR CLOSER

Standard installation template for LEFT hand doors mounted on door on pull side

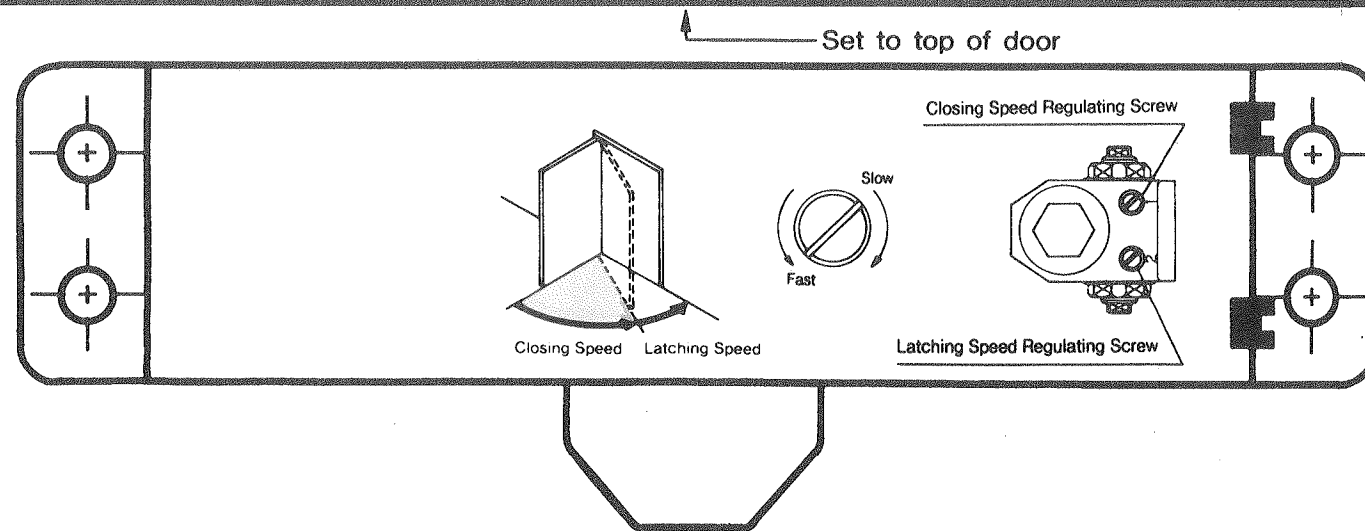
CHART FOR HAND OF DOOR

Pull side of door

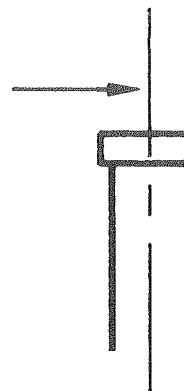
Pull side of door



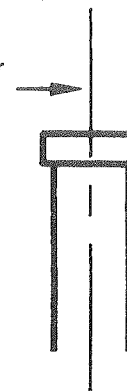
Left hand door. Use index mark 1



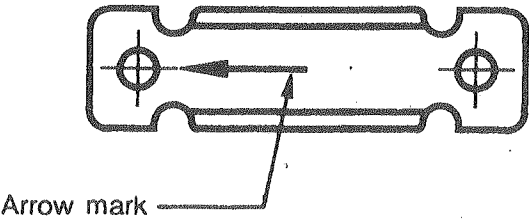
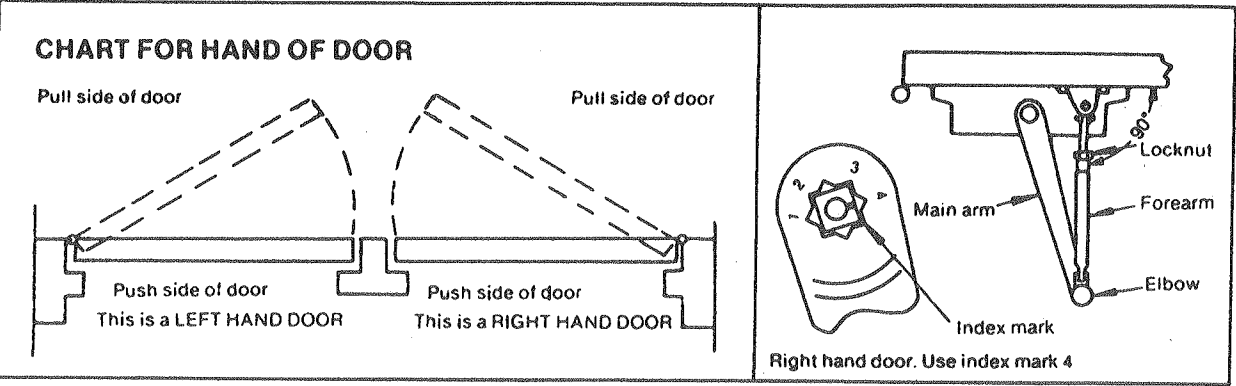
Fold here and set to hinge center of door for opening to 180° (For Standard Model only)



Fold here and set to hinge center of door for opening to 105° (For Back - Check Model)



STANDARD/PRESET IN BACK CHECK DOOR CLOSER
Standard installation template for RIGHT hand doors mounted on door on pull side



Top jamb of frame

