

HINGE PIN STOPS

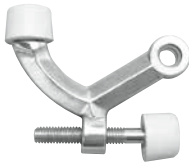
GENERAL HARDWARE

HINGE PIN STOPS

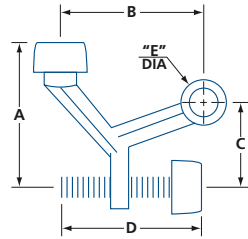
805, 3506



805



3506C15



805

- For use on hinged doors
- Adjustable door opening angle
- Fits $\frac{1}{4}$ " (6.4 mm) diameter hinge pin

3506

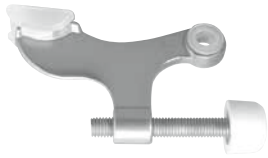
- For use on hinged doors
- Adjustable door opening angle
- Removable nylon bushing
- Fits $\frac{19}{64}$ " (6 mm) and $\frac{19}{64}$ " (7.5 mm) diameter hinge pins

MODEL	FINISH	A	B	C	D	E	/BOX
805	Brass plated	$1\frac{5}{8}$ (41.3)	$1\frac{5}{8}$ (41.3)	$1\frac{1}{8}$ (28.6)	$1\frac{5}{8}$ (41.5)	$\frac{1}{4}$ (5.4)	25
3506	C3, C11P, C15, C15A, C26D	$1\frac{5}{8}$ (41.3)	2 (50.8)	$1\frac{1}{8}$ (28.6)	$1\frac{15}{16}$ (49.2)	$\frac{5}{8}$ (15.9)	25

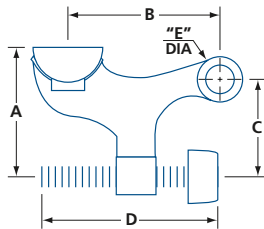
IN (MM)

HINGE PIN STOP – PIVOTING SHOE

3507



3507C15



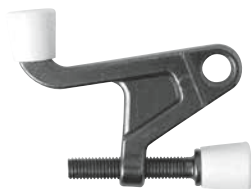
- For use on hinged doors
- Adjustable door opening angle
- Removable nylon brushing
- Fits $\frac{19}{64}$ " (6 mm) and $\frac{19}{64}$ " (7.5 mm) diameter hinge pins
- Zinc die-cast body
- Self-pivoting shoe

MODEL	FINISH	A	B	C	D	ø E	/BOX
3507	C3, C11P, C15, C15A, C26D	$1\frac{7}{16}$ (36.5)	$1\frac{7}{8}$ (47.6)	$1\frac{1}{8}$ (28.6)	2 (50.8)	$\frac{15}{64}$ (7.5)	50

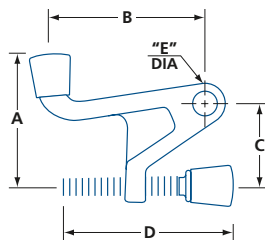
IN (MM)

HINGE PIN STOP

3508



3508C15A



- For use on hinged doors
- Adjustable door opening angle
- Zinc die-cast body
- Fits $\frac{1}{4}$ " (6.4 mm) diameter hinge pin

MODEL	FINISH	A	B	C	D	ø E	/BOX
3508	C15A, C26D	$1\frac{7}{16}$ (36.5)	$1\frac{7}{8}$ (47.6)	$1\frac{1}{4}$ (31.8)	$1\frac{15}{16}$ (49.2)	$\frac{1}{4}$ (6.4)	50

IN (MM)