

HINGE PIN STOPS

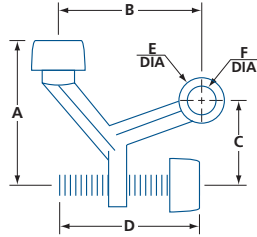
GENERAL HARDWARE

HINGE PIN STOPS

805, 3506



805

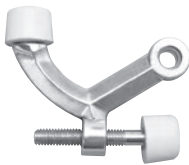


805

- For use on hinged doors
- Adjustable door opening angle
- Fits 1/4" (6 mm) diameter hinge pin

3506

- For use on hinged doors
- Adjustable door opening angle
- Removable nylon bushing
- Fits 1/4" (6 mm) or 5/16" (7.5 mm) diameter hinge pins



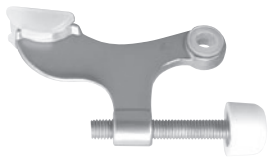
3506C15

| MODEL | FINISH | A | B | C | D | øE | øF | /BOX |
|-------|------------------------------|-----------------|-----------------|-----------------|-------------------|----------------|------------------------------|------|
| 805 | Brass plated | 1 5/8 (41.3) | 1 5/8 (41.3) | 1 1/8 (28.6) | 1 5/8 (41.5) | 1/2 (13) | 1/4 (6.4) | 25 |
| 3506 | C3, C11P, C15, C15A, C26D | 1 5/8 (41.3) | 2 (50.8) | 1 1/8 (28.6) | 1 15/16 (49.2) | 9/16 (14.7) | 1/4 OR 5/16* (6.4 OR 7.5) | 25 |

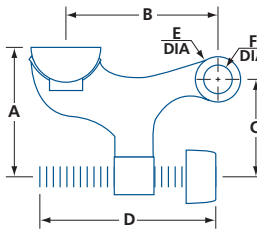
IN (MM) (*) REMOVE BUSHING FOR LARGER DIAMETER

HINGE PIN STOP – PIVOTING SHOE

3507



3507C15



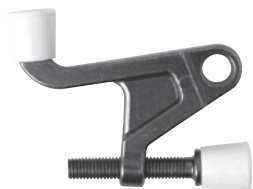
- For use on hinged doors
- Adjustable door opening angle
- Removable nylon brushing
- Fits 1/4" (6 mm) or 5/16" (7.5 mm) diameter hinge pins
- Zinc die-cast body
- Self-pivoting shoe

| MODEL | FINISH | A | B | C | D | øE | øF | /BOX |
|-------|------------------------------|------------------|-----------------|-----------------|-------------|-------------|------------------------------|------|
| 3507 | C3, C11P, C15, C15A, C26D | 1 7/16 (36.5) | 1 7/8 (47.6) | 1 1/8 (28.6) | 2 (50.8) | 1/2 (13) | 1/4 OR 5/16* (6.4 OR 7.5) | 50 |

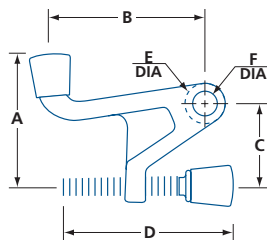
IN (MM) (*) REMOVE BUSHING FOR LARGER DIAMETER

HINGE PIN STOP

3508



3508C15A



- For use on hinged doors
- Adjustable door opening angle
- Zinc die-cast body
- Removable nylon brushing
- Fits 1/4" (6 mm) or 5/16" (7.5 mm) diameter hinge pins

| MODEL | FINISH | A | B | C | D | øE | øF | /BOX |
|-------|------------|------------------|-----------------|-----------------|-------------------|-------------|------------------------------|------|
| 3508 | C15A, C26D | 1 7/16 (36.5) | 1 7/8 (47.6) | 1 1/4 (31.8) | 1 15/16 (49.2) | 1/2 (13) | 1/4 OR 5/16* (6.4 OR 7.5) | 50 |

IN (MM) (*) REMOVE BUSHING FOR LARGER DIAMETER