

WALL STOPS

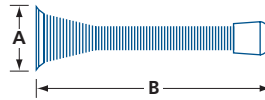
GENERAL HARDWARE

FLEXIBLE WALL-MOUNTED DOOR STOPS

615, 3515, 3555



615C15



- For interior use
- Flexible steel spring
- Mounting hardware included: wood screw



3515C15



3515C19



3555C15

MODEL	FINISH	∅ A	B	/BOX	/CASE
615	C11P, C15, C15A, C3	15/16 (23.8)	3 (76)	50	600
3515	C11P, C15, C15A, C26, C26D, C3, C5	15/16 (23.8)	3 (76)	50	500
3515	C19	15/16 (23.8)	3 3/8 (86)	—	300
3555	C15	1 1/16 (26.9)	4 (102)	50	500

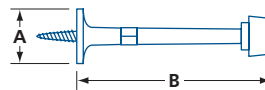
IN (MM)

RIGID WALL-MOUNTED DOOR STOP

692



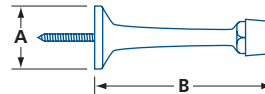
692 BP



- For interior use
- Solid brass or zinc die-cast
- Integrated wood screw



6131 C15



MODEL	FINISH	MATERIAL	∅ A	B	/BOX	/CASE
692	BP	Zinc die-cast	1 3/16 (20.6)	2 7/8 (73)	50	—
6131	C10B, C15, C15A, C19, C26, C26D, C3	Solid brass	1 (25.4)	3 (76)	25	250

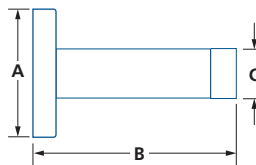
IN (MM)

RIGID WALL-MOUNTED DOOR STOP - SQUARE

3538



3538-630



- For interior use
- Stainless steel, satin finish
- Concealed mounting screws
- Mounting hardware included: wood screw and plastic anchors

MODEL	FINISH	∅ A	B	C	/UNIT
3538	630	1 27/32 (46.5)	3 5/32 (80)	3/4 (19)	1

IN (MM)