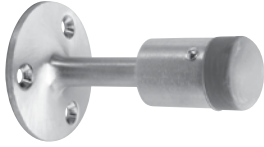


WALL STOPS

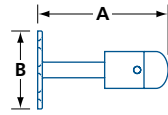
GENERAL HARDWARE

WALL-MOUNTED DOOR STOP

R474, R475



R474 C26D



- For exterior / interior use
- Solid brass
- Non-marking rubber tip
- Mounting hardware included:
 - #R474 - wood screws
 - #R475 - lead shielding, masonry anchor, wood screws

#R470REP - Replacement rubber tip

MODEL	FINISH	A	ø B	/BOX
R474	C3, C26D	3½ (89)	2¾ (56)	12
R475	C26D	3½ (89)	2¾ (56)	12

IN (MM)

CONVEX & CONCAVE WALL-MOUNTED DOOR STOP

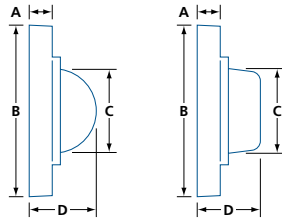
T231, T233



T231 C26D



T233 C26D



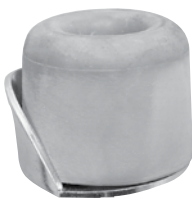
- Zinc die-cast
- Non-marking rubber
- Concealed mounting screws
- Mounting hardware included: wood screw, anchors for brick walls and drywall

MODEL	FINISH	A	ø B	ø C	D	/BOX	/CASE
T231	C19, C3, C26D	5/16 (7.9)	2½ (64)	1 1/16 (33.3)	1 (25.4)	25	250
T233	C19, C3, C26D	5/16 (7.9)	2½ (64)	1 1/16 (33.3)	1 (25.4)	25	250

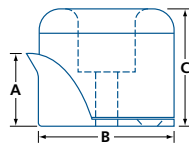
IN (MM)

DOOR BUMPER

64BU



64BU



- Floor or wall mountable
- Non-marking rubber with steel support
- Mounting hardware included: wood screw

MODEL	FINISH	A	ø B	C	/BOX
64BU	Zinc plated	1 5/16 (23.8)	1 5/8 (41.3)	1 1/16 (33.3)	20

IN (MM)

